



THOMPSON-NICOLA REGIONAL DISTRICT
ELECTORAL AREAS “E” “I” & “J”
EVACUATION ORDER

Pursuant to Section 5.4 of TNRD Local Authority Emergency Program Bylaw No. 2017, 2004, an Evacuation Order has been issued by Chair Ranta from the Thompson-Nicola Regional District at the Emergency Operations Centre (EOC) in Kamloops.

The Elephant Hill wildfire is threatening properties in the Deadman Vidette area within Electoral Areas “E”, “I” and “J”.

Because of the potential danger to life and health, the Thompson-Nicola Regional District has ordered everyone to evacuate the following properties immediately:


- 6141, 6228, 6288, 6511 Ashcroft Rd
- 7888, 8396 Clinton-Upper Loon Lake FSR
- 5910 Deadman-Cache Creek Rd
- 3653 to 10020 Deadman-Vidette Rd
- 2373, 4361, 5105, 5765, 6657, 6781, 6845, 6945 Trans-Canada Hwy

Additionally, **all properties** located within the red Evacuation Order area, as shown on the attached map.

If you are in the described area, you must leave immediately. Travel to Hwy 1 and then east to Kamloops. It is suggested that evacuees shut off all gas and electrical appliances, other than refrigerators and freezers. If you have large animals/livestock in need of shelter, please contact the TNRD EOC at 1-866-377-7188.

If you require support services such as food and accommodation please register at the Sandman Centre at 300 Lorne Street, Kamloops, BC.

If you do not require these services all evacuees are still required to register with the Red Cross at 1-800-863-6582 or www.redcross.ca.



P.A.J. Ranta
Chair of the Board of Directors

17:00 hours
Time

2017/08/04
Date (Yr/Month/Day)

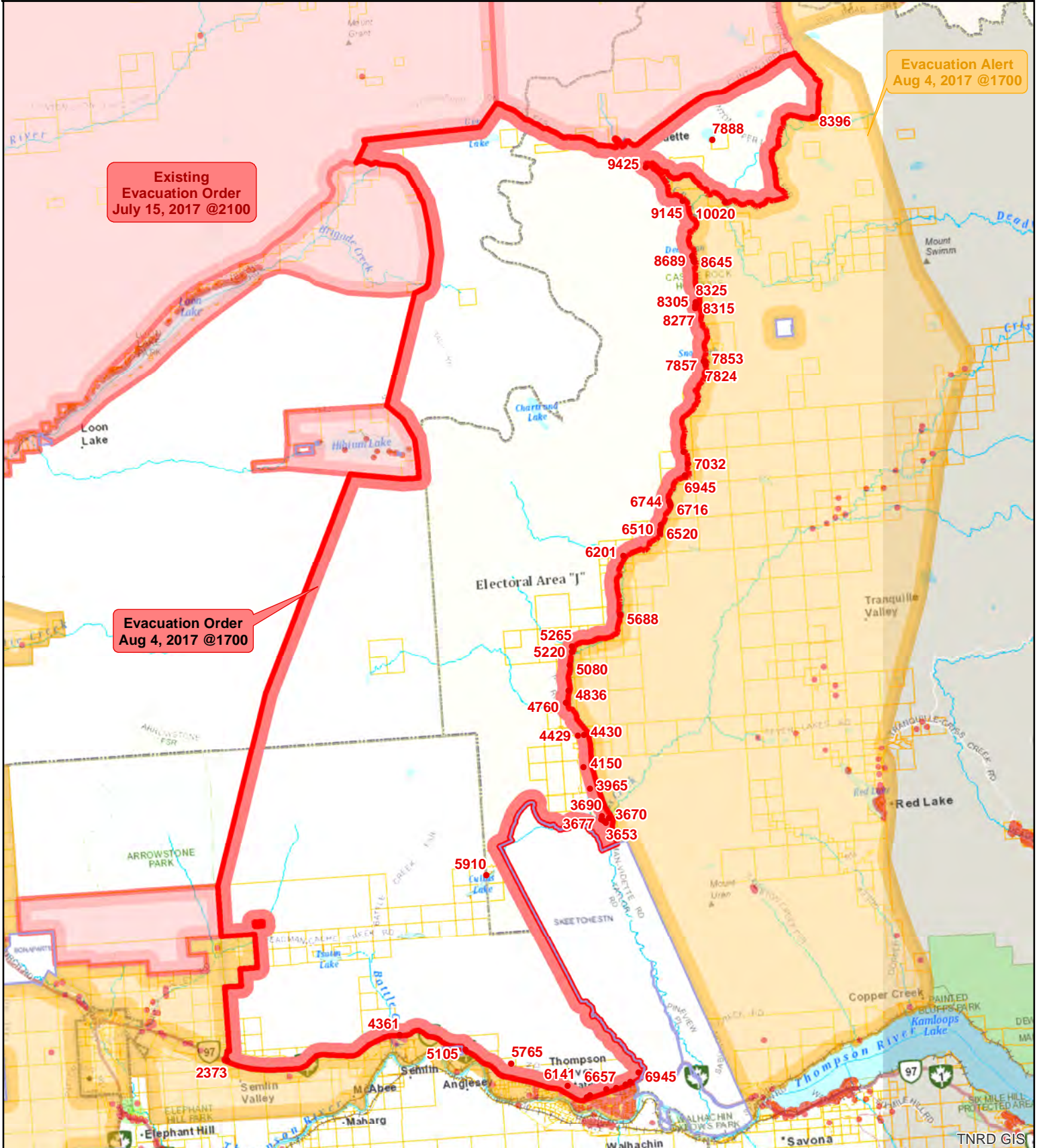
For more information contact: Debbie Sell, Information Officer EOC
Phone: (250) 377-7188 or
Toll Free in BC at 1-866-377-7188

FOR IMMEDIATE RELEASE

Kamloops, BC – August 4, 2017 @ 17:00 hrs



Thompson Nicola Regional District Deadman Vidette - K20637 EVACUATION ORDER



Existing
Evacuation Order
July 15, 2017 @2100

Evacuation Alert
Aug 4, 2017 @1700

Evacuation Order
Aug 4, 2017 @1700

- Evacuation Order
- Evacuation Alert
- Evacuation Rescind
- Evacuation All Clear
- Address Points

Map Scale: 1:245,316

Meters
0 1,950 3,900 7,800

The information on this map was compiled by the TNRD for regulatory and internal reference purposes only. No representation or warranty is made as to the accuracy of the information.

Map Drawn: 04 Aug 2017 @ 4:44:41 PM