



Thompson-Nicola Regional District

Electoral Area “E” (Bonaparte Plateau) Electoral Area ‘I’ (Blue Sky Country) Clinton Corridor

EVACUATION ALERT

An evacuation alert has been issued by the Thompson-Nicola Regional District.

The wildfire in the area of Clinton continues to pose an imminent threat to people and property. Due to the potential danger to life and health, the Thompson-Nicola Regional District has issued an Evacuation Alert for the following properties and areas shown on the attached map:

- 6681, 6697 26 Mile Frontage Rd
- 4753, 4797, 4864, 4980, 5004, 5015, 5037, 5077, 5221, 5296, 5053, 5385, 5411, 5468, 5511, 5515, 5525, 5529, 5589, 5637, 5661, 5665, 6265, 6281, 6353, 6696, 6715, 6729, 6769, 6801, 6805, 6814, 6817, 6824, 6848, 6855, 6935, 6938, 7026, 7062 Hwy 97
- 15, 19 Loon Lake Rd
- 1015, 1020, 1041, 1044 Cody Rd
- 3876, 3892, 3912, 3948, 3996, 4016, 4024, 4028, 4032, 4040, 4048, 4052, 4060, 4068, 4072, 4080, 4088, 4132, 4160, 4164, 4168, 4176, 4180, 4188, 4152, 4192, 4196 Hills Frontage Rd
- 2811, 2812, 2949, 2993, 3265, 3269, 3419, 3430, 3476, 3540, 3580, 4276, 4460, 4472, Hwy 97
- 2628 Hwy 99
- 3515, 3540 Jackson Rd
- 925 Patterson Rd
- 992, 1004, 1016 Ray Rd
- 4880, 4896, 4904, 4908, 4920, 4936 Goble Frontage Rd

An evacuation alert has been issued to prepare you to evacuate your premises and property should it be found necessary. Residents will be given as much advance warning as possible prior to the evacuation; however you may receive limited notice due to changing conditions.

WHAT YOU SHOULD DO WHEN AN ALERT IS IN EFFECT

1. Locate all family members and be prepared to evacuate your residence and property to an identified safe reception center.
2. Gather essential items such as medications, eyeglasses, valuable papers (insurance), photographs and immediate care needs for dependants.
3. Prepare to move any disabled persons and children.
4. Collect pets and pet needs.
5. If possible, move livestock to a safe area.

IN THE EVENT AN EVACUATION IS REQUIRED, residents described above identified on the attached map will need to exit the area.

If you require support services such as food and accommodation please register at the Sandman Centre at 300 Lorne Street, Kamloops, BC.

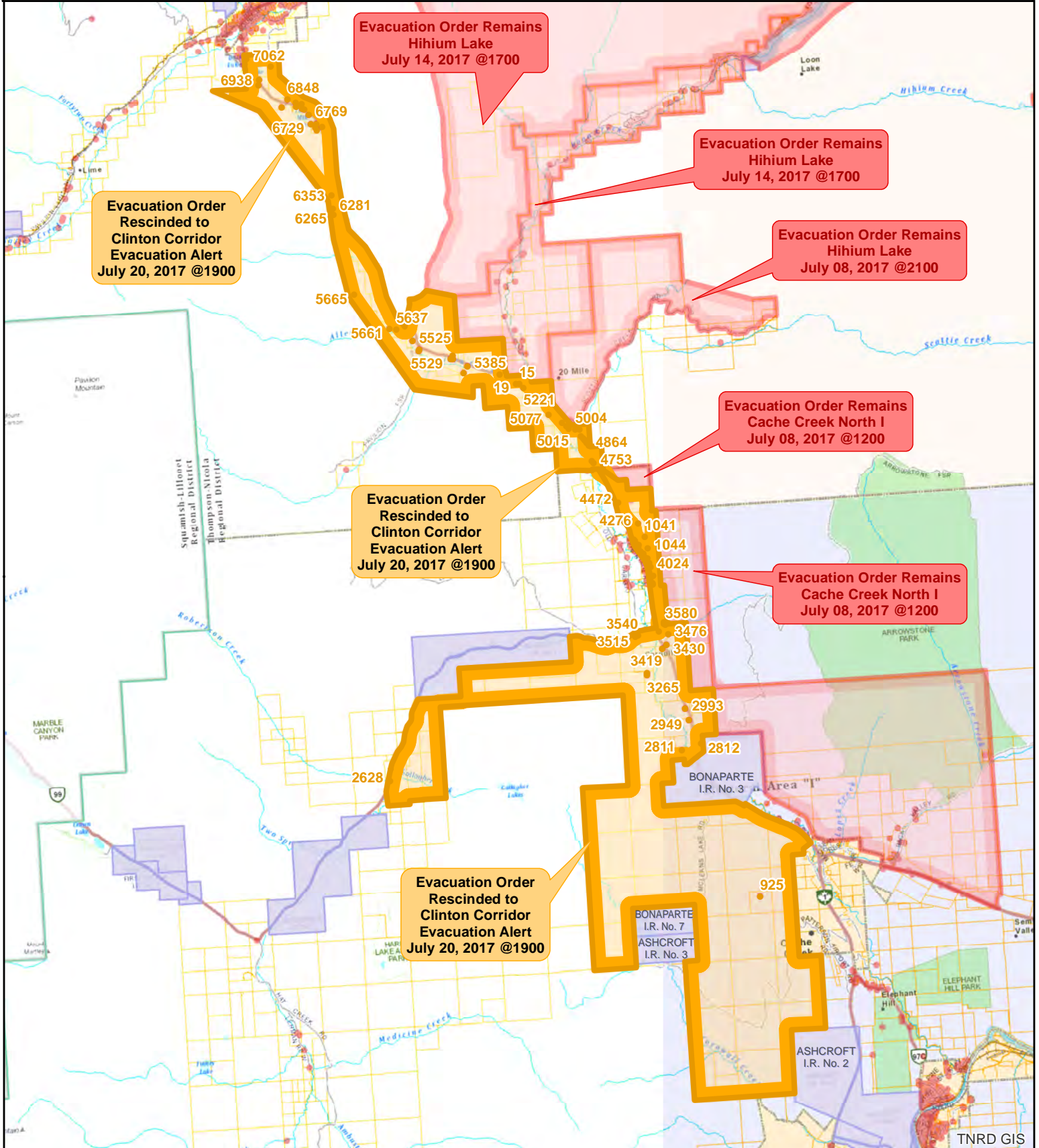
If you do not require these services all evacuees are still required to register with the Red Cross at 1-800-863-6582 or www.redcross.ca

If you require transportation assistance or more information contact the Thompson-Nicola Regional District Emergency Operations Centre at **1-866-377-7188**.

For Immediate Release: July 20, 2017, 21:00 hrs.



Thompson Nicola Regional District
 Clinton Corridor Hwy 97 - K20637
EVACUATION ALERT



Evacuation Order Remains
 Hihium Lake
 July 14, 2017 @1700

Evacuation Order Remains
 Hihium Lake
 July 14, 2017 @1700

Evacuation Order
 Rescinded to
 Clinton Corridor
 Evacuation Alert
 July 20, 2017 @1900

Evacuation Order Remains
 Hihium Lake
 July 08, 2017 @2100

Evacuation Order Remains
 Cache Creek North I
 July 08, 2017 @1200

Evacuation Order
 Rescinded to
 Clinton Corridor
 Evacuation Alert
 July 20, 2017 @1900

Evacuation Order Remains
 Cache Creek North I
 July 08, 2017 @1200

Evacuation Order
 Rescinded to
 Clinton Corridor
 Evacuation Alert
 July 20, 2017 @1900

EvacuationStatus

- Evacuation Alert
- Evacuation Order
- Evacuation Rescind

● Address Points

Map Scale: 1:100,000

Meters

0 1,400 2,800 5,600

The information on this map was compiled by the TNRD for regulatory and internal reference purposes only. No representation or warranty is made as to the accuracy of the information.

Map Drawn: 20 July 2017 @ 9:10:58 PM