



## THOMPSON-NICOLA REGIONAL DISTRICT

### ELECTORAL AREA "I"

### EVACUATION ORDER

Pursuant to Section 5.4 of TNRD Local Authority Emergency Program Bylaw No. 2017, an Evacuation Order has been issued by Chair Ranta from the Thompson-Nicola Regional District at the Emergency Operations Centre (EOC) in Kamloops.

The rapidly moving wildfire currently located in Electoral Area "I" continues to threaten properties near Cache Creek resulting in the need to expand the current Evacuation Order.

Because of the potential danger to life and health, the Thompson-Nicola Regional District has ordered everyone to evacuate the following properties immediately:

- 3465 Back Valley Rd
- SW ¼ of Section 35, Twp 21, Range 24, W6M
- NW ¼ of Section 35, Twp 21, Range 24, W6M
- NE ¼ of Section 35, Twp 21, Range 24, W6M
- SW ¼ of Section 2, Twp 22, Range 24, W6M
- SE ¼ of Section 2, Twp 22, Range 24, W6M

See Attached Map

If you are in the described area, you must leave immediately and report to the Emergency Social Services (ESS) Reception Centre at Thompson Rivers University (TRU) Old Main Building, 900 McGill Road in Kamloops, BC. It is also suggested that evacuees turn off the power and propane to their residences.

P.A.J. Ranta

Chair of the Board of Directors

1830 hours

Time

2017/07/09

Date (Yr/Month/Day)

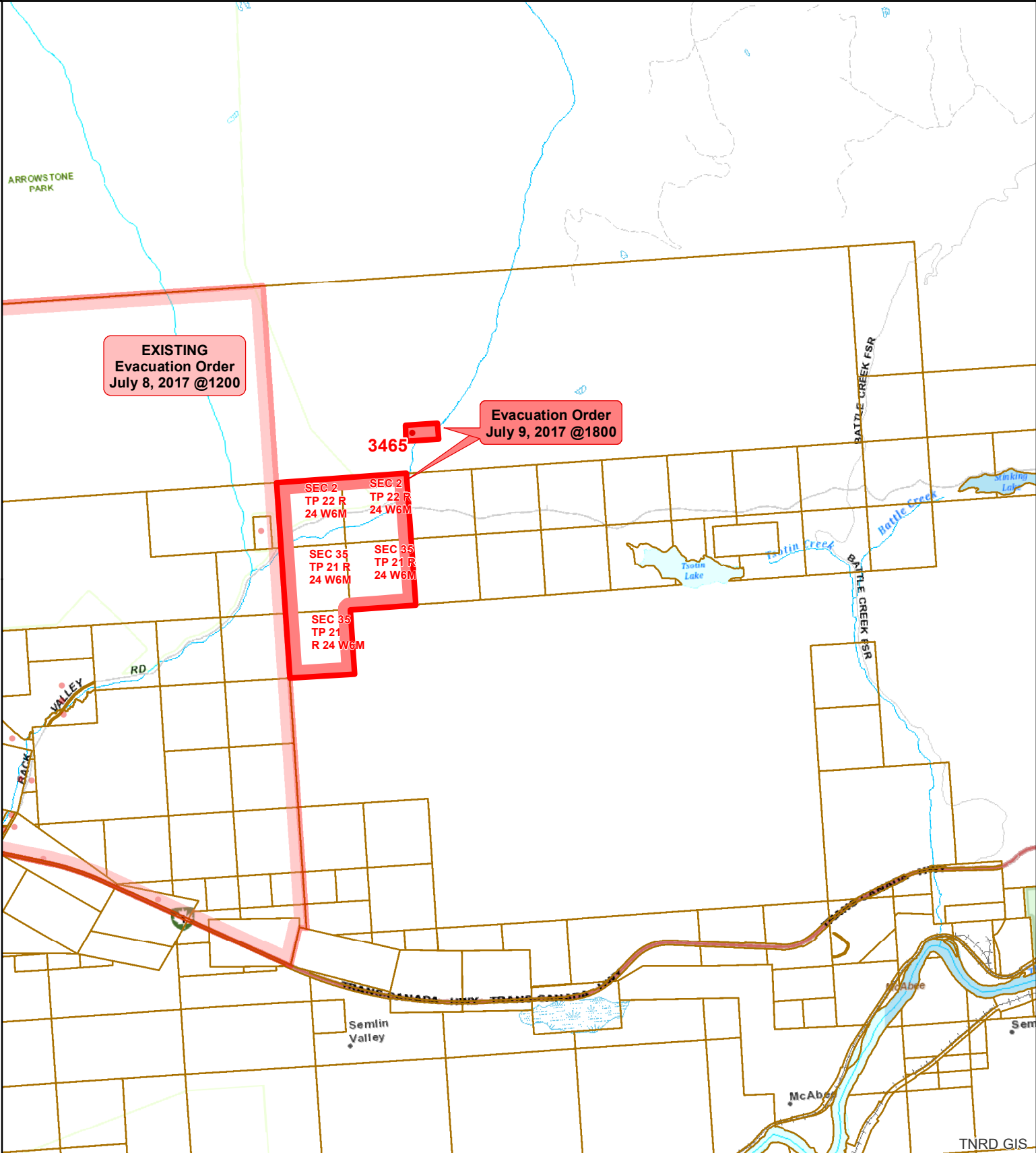
For more information contact: Debbie Sell, Information Officer EOC  
Phone: (250) 377-7188 or  
Toll Free in BC at 1-866-377-7188

FOR IMMEDIATE RELEASE

**Kamloops, BC – JULY 9, 2017 @ 1830 hrs**



# Thompson Nicola Regional District Back Valley Rd - K20637 EVACUATION ORDER



**EXISTING**  
Evacuation Order  
July 8, 2017 @1200

**Evacuation Order**  
July 9, 2017 @1800

3465

SEC 2 TP 22 R 24 W6M  
SEC 2 TP 22 R 24 W6M  
SEC 35 TP 21 R 24 W6M  
SEC 35 TP 21 R 24 W6M  
SEC 35 TP 21 R 24 W6M

- EvacuationStatus**
- Evacuation Alert
  - Evacuation Order
  - Evacuation Rescinded
  - Address Points
  - Property

Map Scale: 1:63,484

Meters

0 500 1,000 2,000

The information on this map was compiled by the TNRD for regulatory and internal reference purposes only. No representation or warranty is made as to the accuracy of the information.

Map Drawn: 09 Jul 2017 @ 6:07:48 PM