



Thompson-Nicola Regional District

**Electoral Area "E" (Bonaparte Plateau)
Electoral Area 'I' (Blue Sky Country)
Green Lake South**

PARTIAL EVACUATION ALERT RESCIND

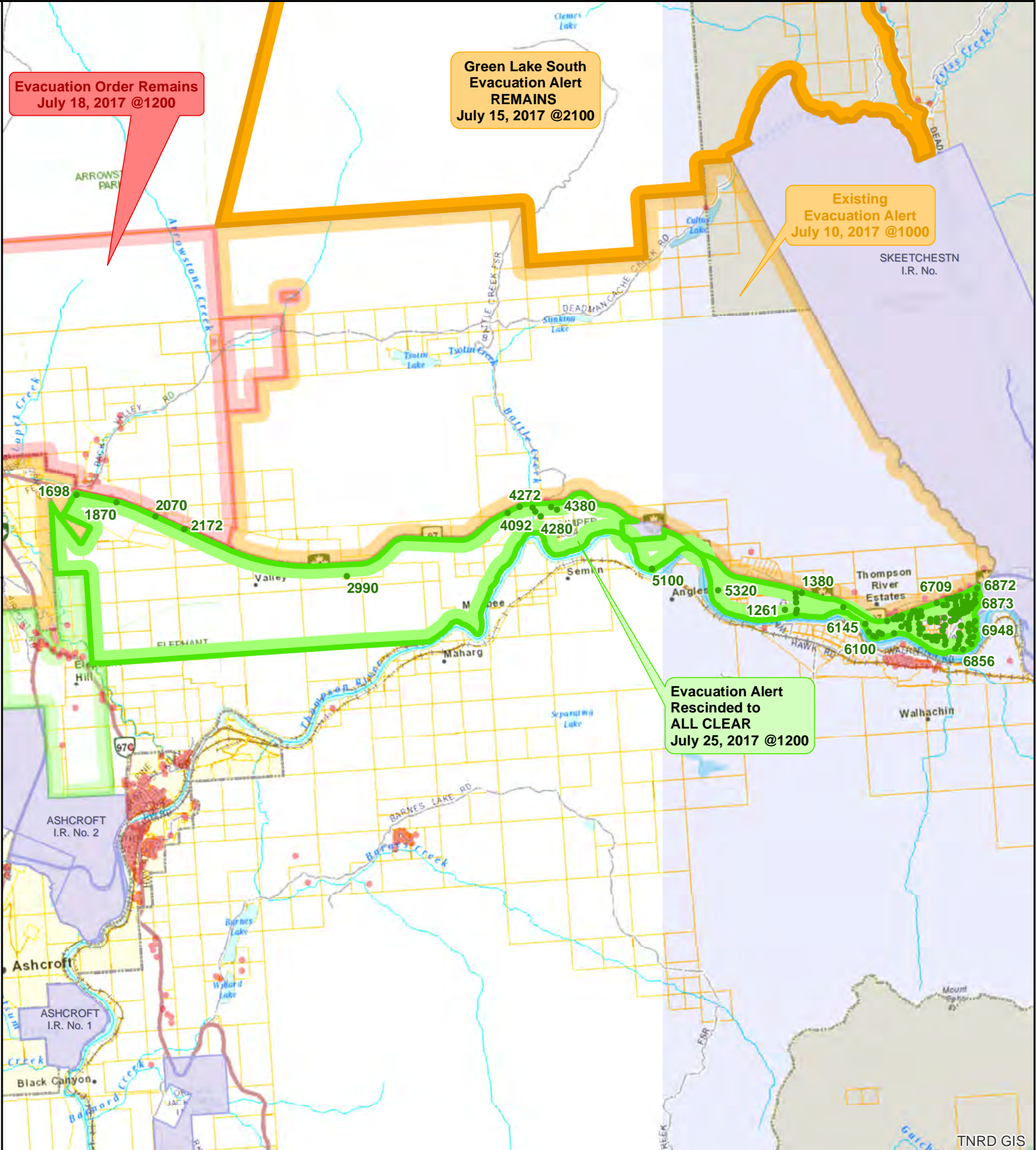
The Thompson-Nicola Regional District (TNRD) Emergency Operations Centre advises that the wildfire south of Green Lake no longer poses an imminent risk of danger to life and health to the areas shown on the attached map.

The Evacuation Alert issued on July 15, 2017 at 21:00 hours, pursuant to Section 5.4 of TNRD Local Authority Emergency Program Bylaw No. 2017, 2004 is therefore rescinded for the areas identified on the attached map, south of Hwy 1 from Walhachin west to Cache Creek.

For Immediate Release: July 25, 2017, 12:00 hrs



Thompson Nicola Regional District
Green Lake South - K20637
EVACUATION ALERT PARTIAL RESCIND TO ALL CLEAR



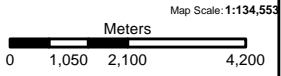
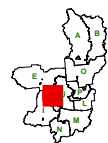
Evacuation Order Remains
 July 18, 2017 @1200

Green Lake South
 Evacuation Alert
 REMAINS
 July 15, 2017 @2100

Existing
 Evacuation Alert
 July 10, 2017 @1000

Evacuation Alert
 Rescinded to
ALL CLEAR
 July 25, 2017 @1200

- Evacuation All Clear
- Evacuation Order
- Rescind
- Evacuation Alert
- Address Points



The information on this map was compiled by the TNRD for regulatory and internal reference purposes only. No representation or warranty is made as to the accuracy of the information.

Map Drawn: 25 Jul 2017 @ 10:54:52 AM

Map Scale: 1:134,553

TNRD GIS