



## **Thompson-Nicola Regional District**

### **Electoral Area "I" (Blue Sky Country) Along Hwy 99**

## **EVACUATION ALERT**

An evacuation alert has been issued by the Thompson-Nicola Regional District.

The Elephant Hill wildfire continues to pose an imminent threat to people and property along Hwy 99 within Electoral Area "I" resulting in the need to issue an Evacuation Alert. Due to the potential danger to life and health, the Thompson-Nicola Regional District has issued an Evacuation Alert as identified on the attached map, including the following:

- 3265, 3269, 3419 Hwy 97
- 1468 Hwy 99
- 3515, 3540 Jackson Rd

An evacuation alert has been issued to prepare you to evacuate your premises and property should it be found necessary. Residents will be given as much advance warning as possible prior to the evacuation; however you may receive limited notice due to changing conditions.

### **WHAT YOU SHOULD DO WHEN AN ALERT IS IN EFFECT**

1. Locate all family members and be prepared to evacuate your residence and property to an identified safe reception center.
2. Gather essential items such as medications, eyeglasses, valuable papers (insurance), photographs and immediate care needs for dependents.
3. Prepare to move any disabled persons and children.
4. Collect pets and pet needs.
5. If possible, move livestock to a safe area.

**IN THE EVENT AN EVACUATION IS REQUIRED**, residents in the above described areas identified on the attached map will need to exit the area.

If you require support services such as food and accommodation please register at the Sandman Centre at 300 Lorne Street, Kamloops, BC.

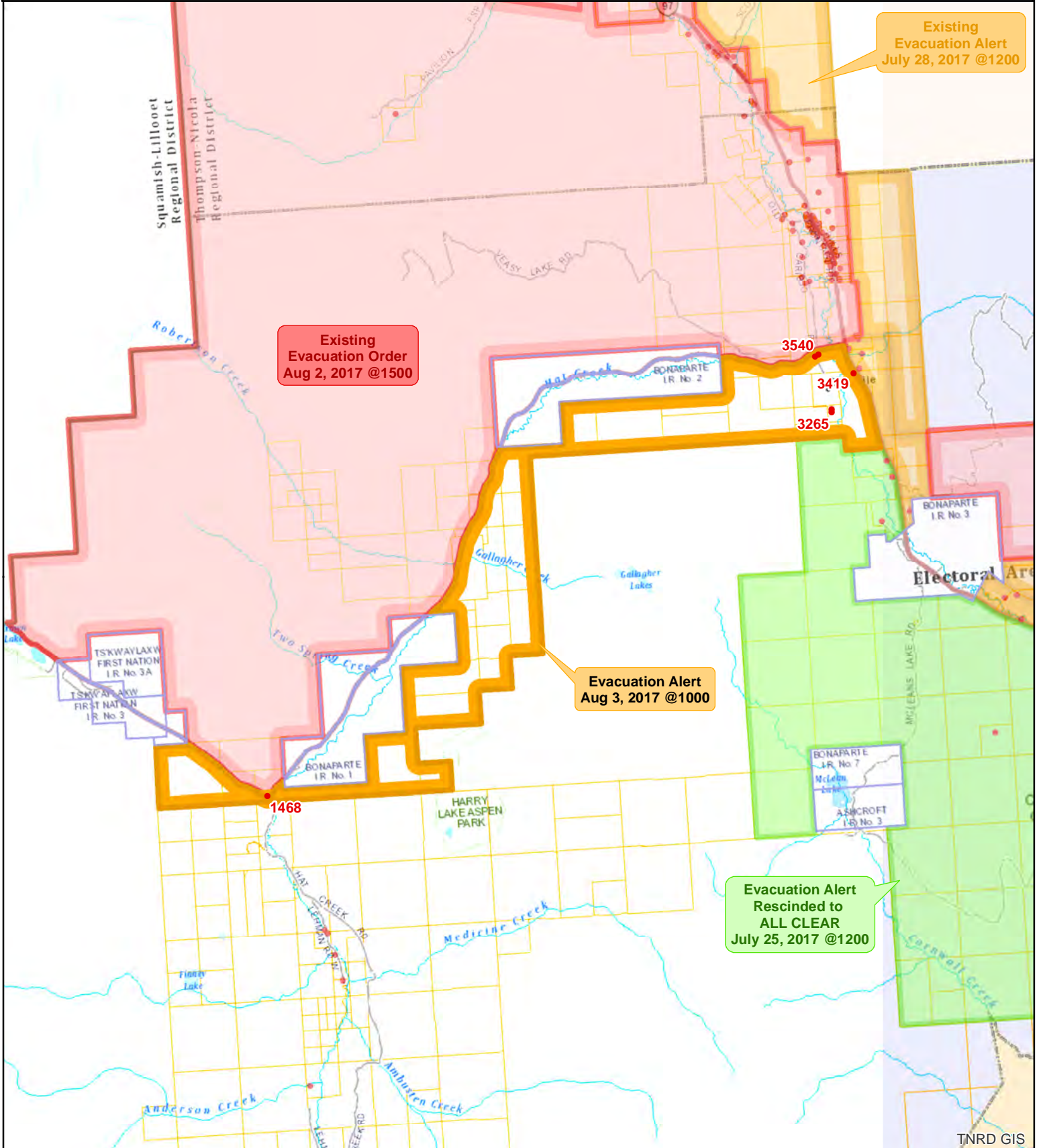
If you do not require these services all evacuees are still required to register with the Red Cross at 1-800-863-6582 or [www.redcross.ca](http://www.redcross.ca)

If you require transportation assistance or more information contact the Thompson-Nicola Regional District Emergency Operations Centre at **1-866-377-7188**.

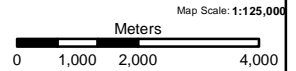
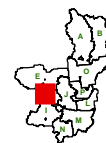
**For Immediate Release: August 3, 2017, 10:00 hrs**



Thompson Nicola Regional District  
 Hwy 99 - K20637  
**EVACUATION ALERT**



- Evacuation Order
  - Evacuation Alert
  - Evacuation Rescind
  - Evacuation All Clear
- Address Points



The information on this map was compiled by the TNRD for regulatory and internal reference purposes only. No representation or warranty is made as to the accuracy of the information.

Map Drawn: 03 Aug 2017 @ 8:54:21 AM

TNRD GIS