



THOMPSON-NICOLA REGIONAL DISTRICT
ELECTORAL AREA "I"
EVACUATION ORDER

Pursuant to Section 5.4 of TNRD Local Authority Emergency Program Bylaw No. 2017, 2004, an Evacuation Order has been issued by Chair Ranta from the Thompson-Nicola Regional District at the Emergency Operations Centre (EOC) in Kamloops.

The Elephant Hill wildfire continues to threaten properties along Hwy 99 within Electoral Area "I".

Because of the potential danger to life and health, the Thompson-Nicola Regional District has ordered everyone to evacuate the following properties immediately:


- 3265, 3269, 3419 Hwy 97
- 1468 Hwy 99
- 3515, 3540 Jackson Rd

Additionally, **all properties** located within the red Evacuation Order area, as shown on the attached map.

If you are in the described area, you must leave immediately. It is suggested that evacuees shut off all gas and electrical appliances, other than refrigerators and freezers. If you have large animals/livestock in need of shelter, please contact the TNRD EOC at 1-866-377-7188.

If you require support services such as food and accommodation please register at the Sandman Centre at 300 Lorne Street, Kamloops, BC.

If you do not require these services all evacuees are still required to register with the Red Cross at 1-800-863-6582 or www.redcross.ca



P.A.J. Ranta
Chair of the Board of Directors

09:00 hours
Time

2017/08/04
Date (Yr/Month/Day)

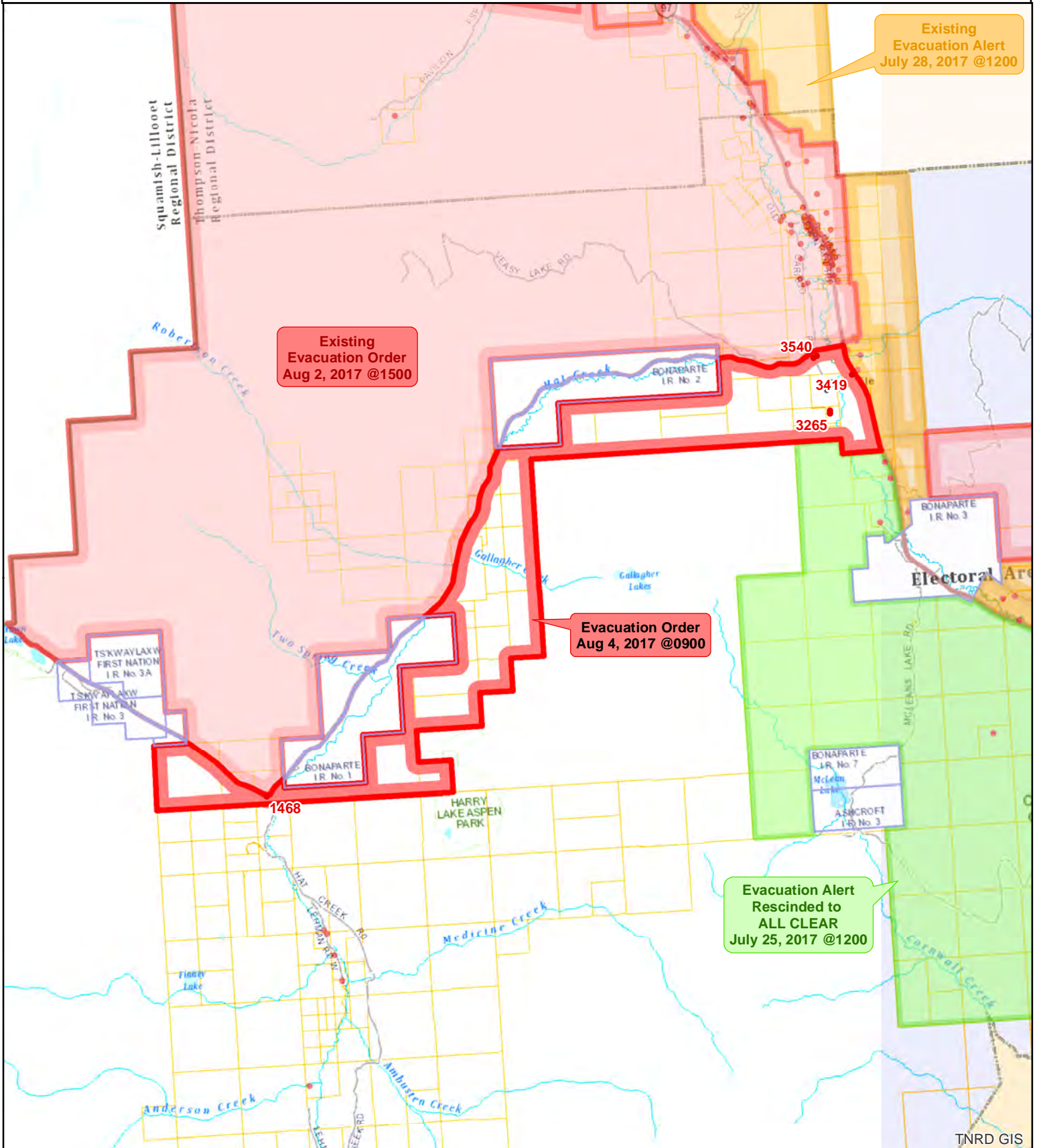
For more information contact: Debbie Sell, Information Officer EOC
Phone: (250) 377-7188 or
Toll Free in BC at 1-866-377-7188

FOR IMMEDIATE RELEASE

Kamloops, BC – August 4, 2017 @ 09:00 hrs



Thompson Nicola Regional District
 Hwy 99 - K20637
EVACUATION ORDER



Existing
Evacuation Alert
July 28, 2017 @1200

Existing
Evacuation Order
Aug 2, 2017 @1500

Evacuation Order
Aug 4, 2017 @0900

Evacuation Alert
Rescinded to
ALL CLEAR
July 25, 2017 @1200

- Evacuation Order
- Evacuation Alert
- Evacuation Rescind
- Evacuation All Clear
- Address Points

Map Scale: 1:125,000

Meters
0 1,000 2,000 4,000

The information on this map was compiled by the TNRD for regulatory and internal reference purposes only. No representation or warranty is made as to the accuracy of the information.

Map Drawn: 04 Aug 2017 @ 8:24:55 AM

TNRD GIS