



THOMPSON-NICOLA REGIONAL DISTRICT

ELECTORAL AREA “E” ELECTORAL AREA “I”

EVACUATION ORDER

Pursuant to Section 5.4 of TNRD Local Authority Emergency Program Bylaw No. 2017, 2004, an Evacuation Order has been issued by Chair Ranta from the Thompson-Nicola Regional District at the Emergency Operations Centre (EOC) in Kamloops.

A rapidly moving wildfire currently located in Electoral Area “E” and Electoral Area “I” continues to threaten properties in the areas south and west of Clinton.

Because of the potential danger to life and health, the Thompson-Nicola Regional District has ordered everyone to evacuate the following properties immediately:


- 3897, 3929, 3973, 3997, 4005, 4011, 4033, 4073, 4109, 4261, 4276, 4460, 4472, 4672, 4753, 4797, 4864, 4980, 5004, 5015, 5037, 5053, 5077, 5521 Hwy 97
- 6421 Jesmond Rd
- 4129, 4141, 4145, 4153, 4161, 4165, 4169, 4173, 4177, 4189, 4197, 4201, 4221 Mickey Frontage Rd
- 3195, 3880, 3881, 4037, 4052, 4053, 4084, 4208, 4209 Old Cariboo Rd
- 178, 179, 235, 244, 265, 656, 700, 772, 838, 874, 875, 958, 1093, 1172, 1173, 1193, 1296, 1428, 1440, 1452, 1468, 1492, 1512, 1532, 1548, 1833, 1965, 1985, 1988, 1992, 1996, 1997, 2012 Pavilion-Clinton Rd
- 7511, 7515 Danielson Rd
- 1015, 1020, 1041, 1044 Cody Rd
- 4880, 4896, 4904, 4908, 4920, 4936 Goble Frontage Rd
- 3876, 3892, 3912, 3948, 3996, 4016, 4024, 4028, 4032, 4040, 4048, 4052, 4060, 4068, 4072, 4080, 4088, 4132, 4152, 4160, 4164, 4168, 4176, 4180, 4188, 4192, 4196 Hills Frontage Rd
- 992, 1004, 1016 Ray Rd

Additionally, **all properties** located within the red Evacuation Order area, as shown on the attached map.

If you are in the described area, you must leave immediately. From Kelly Lake and Pavilion-Clinton Rd, travel to Clinton, then north on Hwy 97 to Hwy 24, then east to Hwy 5, then south to Kamloops. For properties south of Loon Lake Rd, travel south on Hwy 97, then east on Hwy 1 to Kamloops. It is suggested that evacuees shut off all gas and electrical appliances, other than refrigerators and freezers. If you have large animals/livestock in need of shelter, please contact the TNRD EOC at 1-866-377-7188.

If you require support services such as food and accommodation please register at the Sandman Centre at 300 Lorne Street, Kamloops, BC.

If you do not require these services all evacuees are still required to register with the Red Cross at 1-800-863-6582 or www.redcross.ca.

 _____	<u>15:00 hours</u>	<u>2017/08/02</u>
P.A.J. Ranta Chair of the Board of Directors	Time	Date (Yr/Month/Day)

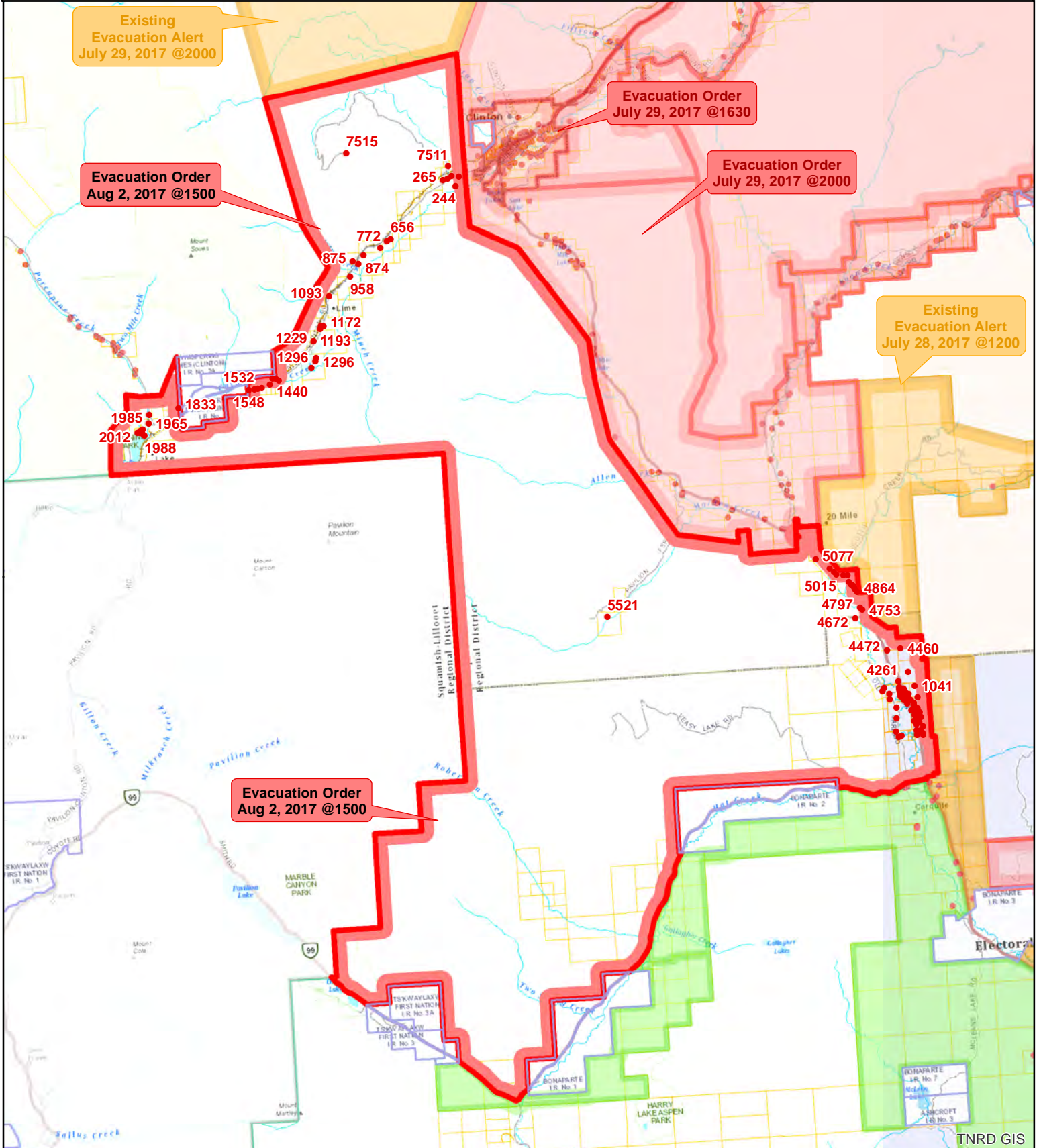
For more information contact: Debbie Sell, Information Officer EOC
Phone: (250) 377-7188 or
Toll Free in BC at 1-866-377-7188

FOR IMMEDIATE RELEASE

Kamloops, BC – AUGUST 2, 2017 @ 15:00 hrs



Thompson Nicola Regional District
 South West of Clinton - K20637
EVACUATION ORDER



Existing
 Evacuation Alert
 July 29, 2017 @2000

Evacuation Order
 Aug 2, 2017 @1500

Evacuation Order
 July 29, 2017 @1630

Evacuation Order
 July 29, 2017 @2000

Existing
 Evacuation Alert
 July 28, 2017 @1200

Evacuation Order
 Aug 2, 2017 @1500

- Evacuation Order
- Evacuation Alert
- Evacuation Rescind
- Evacuation All Clear
- Address Points

Map Scale: 1:175,491

Meters
 0 1,400 2,800 5,600

The information on this map was compiled by the TNRD for regulatory and internal reference purposes only. No representation or warranty is made as to the accuracy of the information.

Map Drawn: 02 Aug 2017 @ 2:45:50 PM