



Daily TNRD Update - Friday, August 11, 2017 – 11:00 a.m.

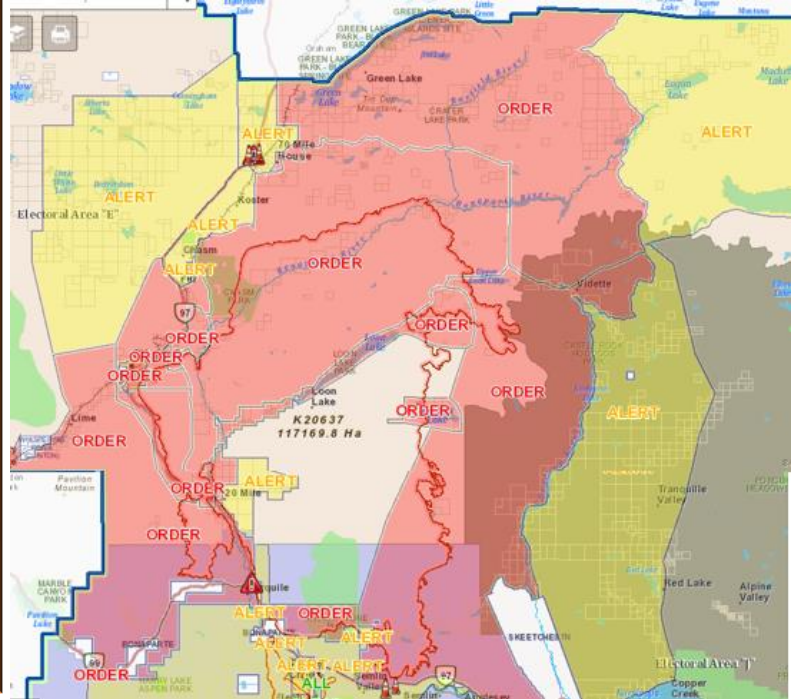
NOTE: Things have remained relatively stable with no new changes to orders or alerts.

- Visit TNRD Facebook and Twitter (@tnrd) for regular updates
- Visit www.tnrd.ca and our online [interactive Evacuation Status map](#) for the most up to date changes in orders and alerts.

ELEPHANT HILL FIRE

Current Evacuation Orders

- Deadman-Vidette Area
- North of Cache Creek- including Hwy 99 corridor
- South west of Clinton
- Village of Clinton
- North East of Clinton
- South of Green Lake
- East of Clinton
- Hihium Lake
- Loon Lake
- North and South of Clinton along Hwy 97 corridor, up to Chasm Rd & down to Loon Lake Rd



Current Evacuation Alerts

- Hwy 97 Corridor – Chasm to 70 Mile House
- Chasm Mill Site
- Areas surrounding Hat Creek, Thompson River Estates, Semlin Valley, Red Lake, Criss Creek Community
- Bonaparte Plateau
- North West of Clinton, including Beaverdam Lake
- North of Cache Creek, including 20 Mile & Scottie Creek
- Village of Cache Creek
- East of Cache Creek

MARTIN MOUNTAIN FIRE – No orders. Alerts on some areas surrounding north end of Monte Lake and Hwy 97, and up into Paxton Valley

Resources/Information:

- ****NEW**** - The public meeting held last night at 6:00 p.m. is available through Facebook or by going into the General Information page of the TNRD website.
- The **Reception Centre** at Sandman Centre will be open from **10:00 a.m. to 3:00 p.m.** to support current evacuees. Emergency Social Services and Red Cross will remain on site to assist new and renewing evacuees. Reminder that all evacuees should also register with Red Cross.

Contact Information:

- TNRD Emergency Operations Centre – 1-866-377-7188
- Cariboo Regional District Emergency Operations Centre – 1-866-759-4977 (www.cariboord.bc.ca)