



TNRD Update as of Tuesday, September 12, 2017

****NEW**** There have been recent changes to evacuation orders South Green Lake, the Sharpe Lake area, and West of Eagan Lake.

- Visit TNRD Facebook and Twitter (@tnrd) for other regular updates
- Visit www.tnrd.ca and our online [interactive Evacuation Status map](#) for the most up to date changes in orders and alerts.

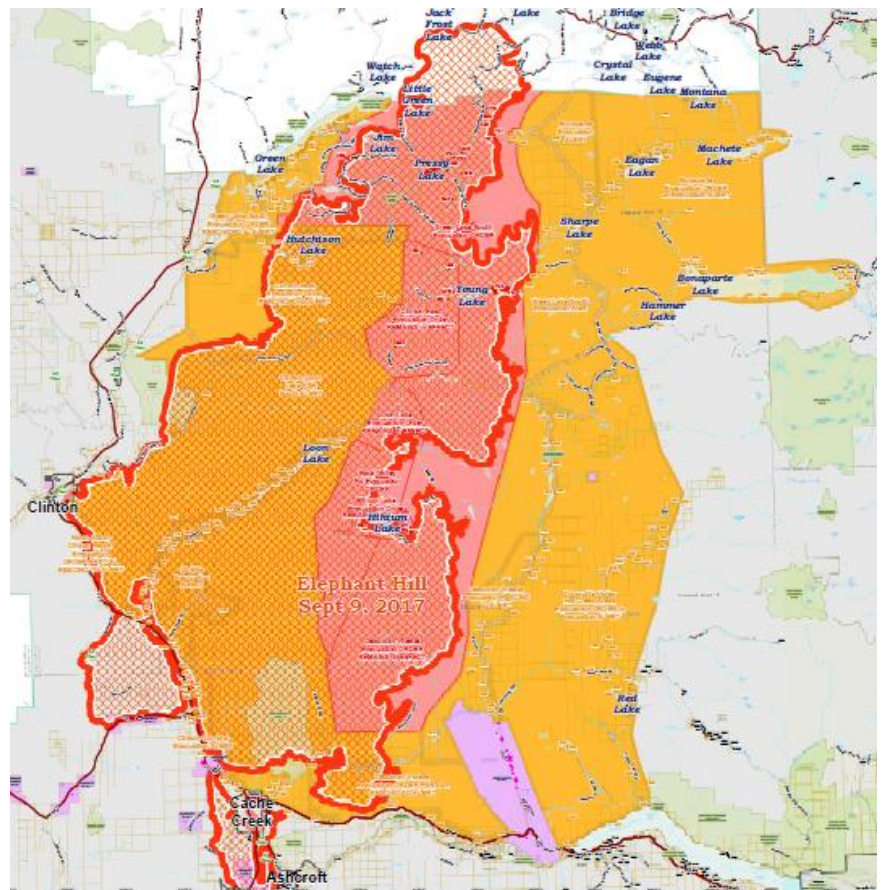
ELEPHANT HILL FIRE

Current Evacuation Orders

- Pressy Lake and area (including Little Pressy Lake)
- Young Lake and area
- Hihium Lake and area

Current Evacuation Alerts

- South of Green Lake (effective 3:00 p.m. Sept 12)
- West of Eagan Lake
- Deadman-Vidette Area, including Deadman-Vidette Road north of Mowich Lake
- Hutchison Lake
- Loon Lake and surrounding area, including Clinton-Loon Lake FSR
- Bonaparte Plateau
- Criss Creek Community & Red Lake areas
- Areas surrounding Hat Creek, Thompson River Estates, Semlin Valley, on the north side of the Hwy 97 and 99
- North of Cache Creek, east of Hwy 97 including 20 Mile & Scottie Creek
- East of Cache Creek, north of Hwy 97



Areas recently changed to ALL CLEAR

- 70 Mile House area, and the Highway 97 Corridor to Clinton
- West side of Hwy 97 to the Hwy 99 junction
- Chasm Provincial Park

Resources/Information:

- View the [TNRD Interactive Map](#) for details on the evacuation status for specific properties.
- For ESS support in other areas of the province, please call the Provincial number at 1 800 585-9559.
- **The Reception Centre at Sandman Centre will be open from 10:00 to noon on Tuesday, September 12 to support evacuees. Hours of operation beyond this date continue to be reviewed.**
- Reminder that all evacuees should also register with Red Cross.